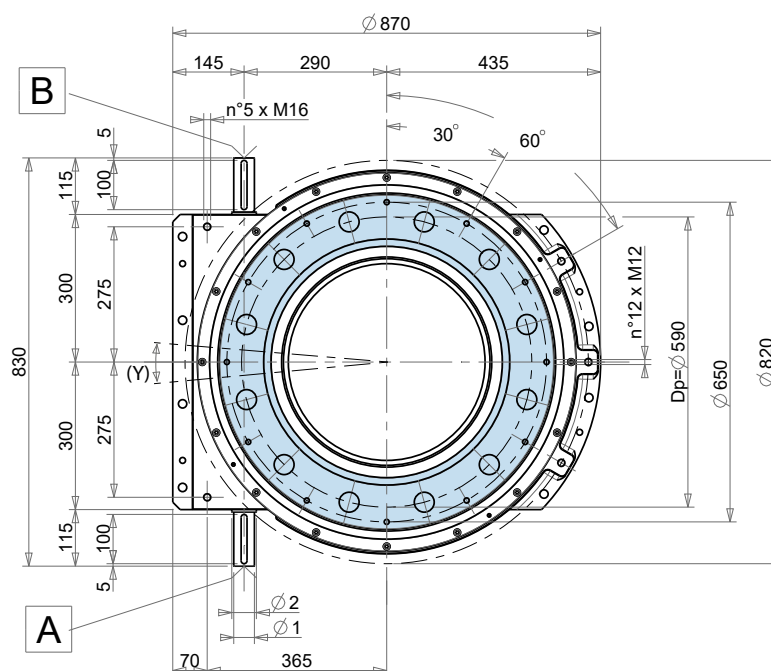
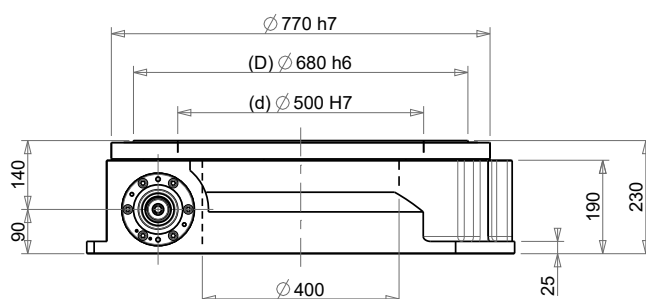
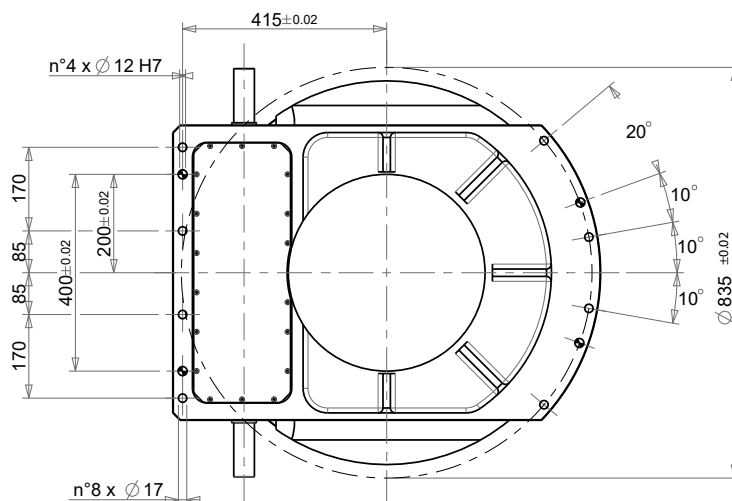
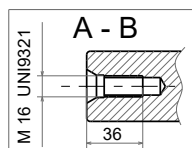
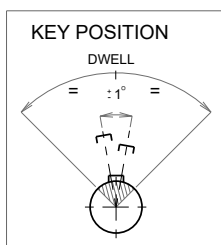




FT

C013/5 - 06/2020



<b>FT 590</b>  375 Kg 815.7 Lbs	<b>A-B</b> 				Reference Riferimento Bezug Référence Referencia	Concentricity Concentricità Konzentrizität Concentricité Concentricidad	Planarity Planarità Planarität Planéité Planaridad	Repeatability Ripetibilità Wiederholbarkeit Répétitivité Repetibilidad			Threaded holes position Posizione fori filettati Löcherposition Position des trou taraudé Posición orificios roscados
								Std	2 Cycles	3 Cycles	
	d1	a	b	c	d	± 0.05 mm					Y ± 0.8 mm ± 10'
Ø1	42 k6	45	12	8	D		± 0.05 mm				
Ø2	50 h6	53.5	14	9	Rp			± 0.05 mm ± 35"	± 0.06 mm ± 42"	± 0.07 mm ± 49"	

Tolerance in compliance with • Tolleranze secondo • Toleranzen gemäß • Tolérances selon • Tolerancias con arreglo a **UNI-ISO2768-1 EN22768-1**