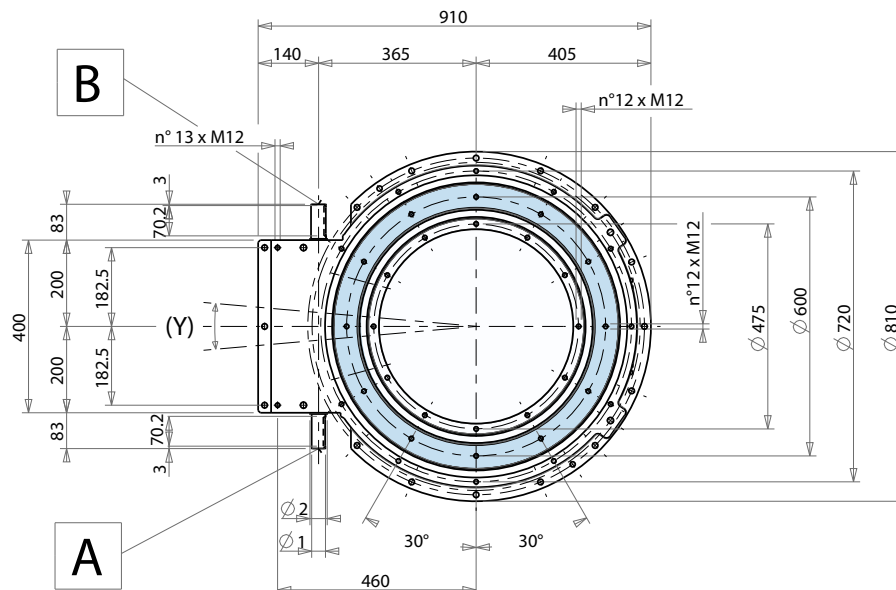
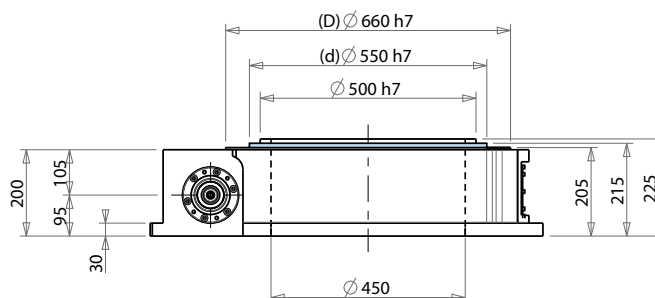
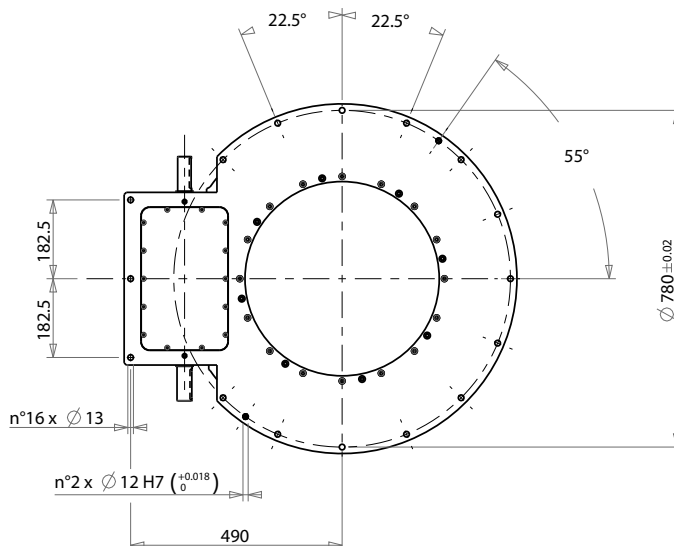
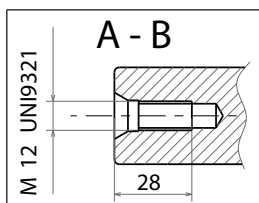
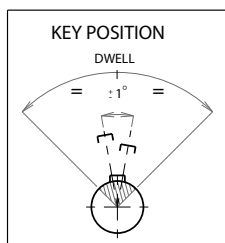


HT

C014/5 - 06/2020



| <b>HT 365</b><br><br>390 Kg<br>858 Lbs | <b>A-B</b><br> |    |    |   | Reference<br>Riferimento<br>Bezug<br>Référence<br>Referencia | Concentricity<br>Concentricità<br>Konzentrität<br>Concentricité<br>Concentricidad | Planarity<br>Planarità<br>Planarität<br>Planéité<br>Planaridad | Repeatability<br>Ripetibilità<br>Wiederholbarkeit<br>Répétitivité<br>Repetibilidad |           |           | Threaded holes position<br>Posizione fori filettati<br>Löcherposition<br>Position des trou taraudé<br>Posición orificios roscados |
|--|----------------|----|----|---|--|---|--|--|-----------|-----------|---|
|  |                |    |    |   |  |   |  | Std  | 2 Cycles  | 3 Cycles  |   |
|  |                |    |    |   |  |   |  |  |           |           |   |
|  | d1             | a  | b  | c | d  | ± 0.05 mm   |  |  | *         |           | Y<br>0.8 mm<br>± 9'   |
| Ø1                                     | 35 k6          | 38 | 10 | 8 | D  |   | ± 0.05 mm  |  |           |           |   |
| Ø2                                     | 40 h6          | 43 | 12 | 8 | Rp   |   |  | ± 0.05 mm  | ± 0.06 mm | ± 0.07 mm |   |

Tolerance in compliance with • Tolleranze secondo • Toleranzen gemäß • Tolérances selon • Tolerancias con arreglo a **UNI-ISO2768-1 EN22768-1**