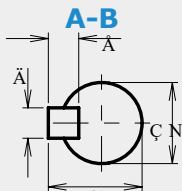
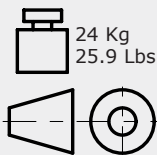


Rotating element • Elemento rotante • Drehelement • Élément tournant • Elemento de giro

LHP  
40



|    | d1               | a    | b | c |
|----|------------------|------|---|---|
| Ø1 | 19 <sup>k6</sup> | 21.5 | 6 | 6 |
| Ø2 | 20 <sup>h6</sup> | 22.5 | 6 | 6 |

General manufacturing tolerance in compliance with •  
Tolleranze generali di fabbricazione secondo •  
Allgemeine Herstellungstoleranzen •  
Tolérances générales de fabrication selon •  
Tolerancia generales de fabricación según  
UNI - ISO 2768-1  
EN 22768-1

NOTES Consult CDS' engineering department for further details  
N.B. Per ulteriori specifiche tecniche consultare il nostro ufficio tecnico CDS  
N.B. Weitere technische Angaben sind über unser technisches Büro CDS erhältlich  
N.B. Pour informations techniques nous contacter  
N.B. Para mayores especificaciones técnicas, consultar a la oficina técnica de CDS